

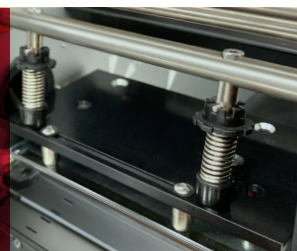
TX Series

INDUSTRIAL BARCODE LABEL PRINTER

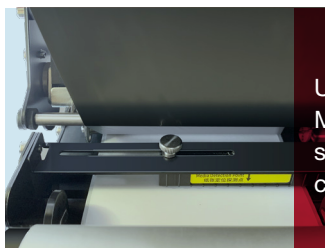


RUGGED
PARTS
DURABLE
MACHINES
SURPASSING
PERFORMANCE

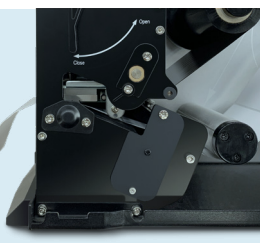
NEW TPH Pressure
Adjusting
exceptional printing
quality



Up/Down Reflective
Media Sensor
super media
compatibility



Innovative
Sidewall Design
All-Metal Fixed Frame
Sturdy and Stable
Extremely Convenient
Consumable Installation



Super accurate
media detection
extra-small label
printing

FAST AND INTELLIGENT INDUSTRIAL-GRADE PRINTING SOLUTION

The original design of TX Series has been taken into account various elements that define an industrial printer: handling ability and memory, media compatibility and loading capacity, speed and performance, printing effect, interface and optional items.

The metal-framed composition of TX series carries all advanced techniques that function in actual performance, producing flash-speed, steady and reliable printing, remarkable print quality, smart and intelligent solution, and compatibility with popular printer control languages.

BENEFITS

TX series can meet your printing needs of stability and reliability, as well as flash-speed and premium performance. The powerful CPU capacity and rugged parts work together to achieve the optimal outcome and significantly increased print efficiency.

TX Series can automatically detect and support popular printer control languages (e.g PPL-E, PPL-Z) to accommodate the ease of replacing other mainstream brand printers.

The carefully designed fully fixed all-metal frame is an innovation that combines stability and convenience. The ingenious side wall design is fused with the fully fixed structure, which not only facilitates the installation of consumables to the greatest extent, but also creates an extremely strong frame structure.

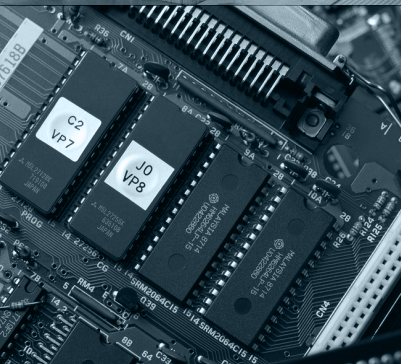
With the adoption of the innovatively designed printhead pressure adjustment kits, outstanding print quality can be assured by tool-free printhead pressure and balance adjustment. Meanwhile, equipped with industrial-grade precision design, TX series stands out for its ultra-precise label positioning, even when printing super small labels with the height of 5 mm.

SPECIFICATIONS

Model	TX2	TX3	TX6
Printing Method	Thermal Transfer		
Printing Resolution	203 dpi	300 dpi	600 dpi
Max Printing Speed	10 ips (254 mm/s)	8 ips (203.2 mm/s)	4 ips (101.6 mm/s)
Max Printing Width	4.09" (104 mm)	4.17" (106 mm)	4.17" (106 mm)
Max Printing Length	157" (4000 mm)	79" (2000 mm)	19.6" (500 mm)
HEAT™ Level	II	I	I
Memory	8 MB FLASH ROM, 16 MB SDRAM		
Media	Width: 4.56" (116 mm) max. 0.79" (20 mm) min. OD: 8" (203.2 mm) max. ID: 1.5" (38 mm) min.	Width: 4.56" (116 mm) max., 0.98" (25mm) min. OD: 8" (203.2 mm) max. ID: 3" (76.2 mm) min.	
Media Thickness	0.0024" (0.06 mm) ~ 0.012" (0.305 mm), including liner		
Ribbon	Ribbon roll: OD: 3.3" (84 mm) max., ID: 1" (25.4 mm) min. Max width: 4.65" (118 mm), Max length: 1968' (600 M), Ink side: both In and Out.		
Media Sensor	Up&Down Reflective (Adjustable) / Transmissive (Adjustable)		
Fonts	PPL-E: Five built-in dot matrix ASCII fonts, Downloadable TrueType Fonts PPL-Z: Seven built-in dot matrix ASCII fonts and one scalable font, Downloadable TrueType Fonts		
Bar Code Types	1D Barcode: Code 39, Code 93, Code 128/subset A, B, C, Codabar, Interleave 2 of 5, UPC A/E 2 and 5 add-on, EAN-13/8/128, UCC-128, etc. 2D Barcode: MaxiCode, PDF417, Data Matrix, QR, etc.		
Interfaces	RS-232 Serial, 10/100 M-bit Ethernet, USB DEVICE 2.0, USB HOST, Centronics Parallel		
LCD Display	Graphic Dot Matrix		
Power Rating	110/220 VAC ±10%, 50/60 Hz		
Weight	15 kgs		
Dimensions	W 11.3" (287 mm) x D 17.6" (448 mm) x H 10.6" (270 mm)		
Operating Environment	Temperature: 32°F ~ +104°F (0°C ~ 40°C), Relative humidity: 5% ~ 85% non condensing		
Storage Environment	Temperature: -40°F ~ +140°F (-40°C ~ 60°C), Relative humidity: 5% ~ 85% non condensing		
Optional Items	External Rewinder, Rotary Cutter		

APPLICATIONS

Industrial Machinery
Electronics
...



* HEAT™, Heating Equilibrium Adaptive Tuning, newly developed by POSTEK, is a cutting edge technology in heating control of thermal print-heads. With HEAT™, the POSTEK printers can significantly improve their performance in the aspects of printout clarity and print speed. The HEAT™ level represents the fineness of the heating uniformity with level I being the finest.

* All specifications are subject to change without notice.

SAMPLES

MODEL	EC5805	CDLOR	BLACK
MEID	A000001AD83039		
RSN	8HWC030215015470		
S/N	EV2AB10E71600042		
SKU	CDHW05Z1		



100000120	100000121
100000122	100000123
100000124	100000125

POSTEK

POSTEK ELECTRONICS CO., LTD.

Wisdom Plaza, Block B, Tower 2, 18th Floor
Qiaoxiang Road, Nanshan District, Shen Zhen,
Guang Dong, China

T +86-755-83240988
F +86-755-83202898

WWW.POSTEKTECHNOLOGIES.COM