



iData K3S

New generation Android Keyboard/Touchcontrol Terminal

More efficient operation, improve enterprise management

iData K3S is a new generation Android keyboard terminal, which has brand-new functions, enhanced battery life design. K3S simplifies the operation of workers, and is more cost-effective. With right angle and dip angle modes, it provides more efficient operation options for workers in different. With the help of iData K3S, it can improve the efficiency of enterprise management.

Dip angle version available, perfect for scan and verification

Right angle and dip angle are available. The scan engine of dip angle version can slide up to 28°, which is helpful for those workers who need to verify or confirm after scanning. They can read and scan at the same time without adjusting the angle.

180° screen flip design for easy downward scanning

While using the right-angle version, the screen will flip 180° for workers to check and confirm scanning information when they need to scan the barcodes which are in the lower part of the shelves. The workers need to hold the device upside down to scan so that they could act fast in sorting and inventory, etc.

New ergonomic design, comfortable and easy

The specially designed keyboard layout and grip texture make workers feel comfortable and easy to use. Whether it is holding upside down to scan or input confirmation, workers can complete all operations effortlessly. And the keypad and touch control of K3S can be operated while wearing gloves.



Store management



E-commerce shipment



Warehouse management



Inventory management

K3S Technical Specifications

System Configuration

Processor	Octa-core 2.0GHz high-performance processor
Operating System	Android 12.0 (GMS)
Memory (ROM + RAM)	32GB + 3GB (standard)
SIM	Single SIM card
Expansion Slot	Micro SD card (up to 256 GB)
Display Screen	4-inch, resolution: 800*480 pixels
Touch Screen	Industrial capacitive screen, support wet-hand operation/glove mode/multi-touch/gesture operation
Camera	8 megapixels of rear camera, support auto-focusing/PDAF
Flashlight	800mA flashlight
Keypad	30 keypads: front key*26, side scan key *2, side power key *1, side custom key*1
Battery	3.85V lithium battery, with 5000mAh, detachable
Audio	Built-in microphone
Charging Method	Type-C charging and pin port charging, support 18W fast charging
Reminder	High power speaker/Vibration reminder/LED reminder
Vibrating Motor	Built-in vibrating motor
Sensors	G-sensor/ Proximity sensor/Light sensor
Intercom Function (Optional)	Support one-button PTT calls

Structure Parameter

Dimension (L*W*D)	162mm*68mm*19mm (the thickest part of dip-angle version is 29.4mm)
Weight	278g (including the battery)

Environmental Parameter

Working Temperature	-20°C - 60°C *Do not charge under low temperature conditions for the safety concerns
Storage Temperature	-40°C - 70°C (without the battery)
Humidity	0 - 95% (no moisture condensation)
Drop Specification	Multiple drops to concrete floor from the height of 1.5m
Roller Drop Specification	1000 times of roller drops from a height of 0.5 meter
Ingress Protection	IP65
ESD Protection	±15KV (air discharge), ±8KV (contact discharge)

Scanning Engine

Barcode Type	It can scan one-dimensional / two-dimensional barcodes
Scanning Accuracy	≥3.33mil
Scanning Angle	Pitch: ±60°; Skew: ±45°; Tilt: 360°
View Angle	Horizontal: 44.3°, Vertical: 28.4°, Diagonal: 51°
Motion Error Tolerance	8m/s

Communication Transmission

WWAN (Network Frequency)	China & Eurasian version: 2G: 900/1800 3G: WCDMA: B1/B8 4G: FDD-LTE: B1/B3/B7/B8/B20, TDD-LTE: B34/B38/B40
WWAN (Data Service)	GSM/GPRS/EDGE/UMTS/HSPA/HSPA+/WCDMA/TD-SCDMA/TDD-LTE/FDD-LTE
WLAN Function	Wi-Fi 802.11a/b/g/n/r/ac (2.4G + 5G dual-band Wi-Fi), support Wi-Fi 5G PA amplifier
Bluetooth	Bluetooth 5.0
GPS	GPS

Communication Interface

USB Interface	Type-C (with headset function) *1
OTG Interface	Support

Development Support

Programming Language	Java
Development API	iScan API (Scanning Development Kits), Device API (Device Management/Configuration Development Kits), Android Standard Interface
Development Tool	Eclipse/Android Studio

Accessories (More details in accessories guide)

Standard Accessories	USB cable*1, power adapter*1, hand strap*1, device-back strap*1, battery*1
Optional Accessories	Single charging cradle, bottom charger, 4-slot charging cradle, fanny pack, protective film

The information of iData products and software service may be subject to change without notice. Please contact your iData sales representative for the latest details.



Official Website

WUXI IDATA TECHNOLOGY COMPANY LTD.

Address: Floor 11, Building B1, Wuxi (Binhu) National Sensing Information Center, No.999 Gaolang East Road, Wuxi City, Jiangsu Province, P.R.C.

E-mail: sales@idataglobal.com

Website: www.idataglobal.com

Each product comes with a pack of practical and cost-effective accessories

USB Cable

Type-C to USB cable, 1m in length, support charging and data transmission



CHA-USBC-GNR

Hand Strap

Wear on your wrist to carry the device, avoid accidental drops, and assure the safety of equipment



MNT-HS-GNR

Device-back Strap

Attach on the device back to help you hold the device easily and firmly, avoid accidental drops



MNT-BS-K3

Battery

5000mAh, detachable design.

ps: every product comes with 1 unit, you can purchase extra unit



CHA-BTRY-K3S-5000MA

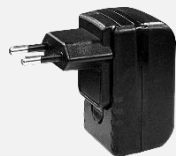
Power Adapter

Input voltage 100-240V, output 5V2A. Support plug types of China/Europe/UK/US/Australia, match with CHA-USBC-GNR

ps: you may have one of the power adapters



CHA-PWAD-GNR-5V2A-CN



CHA-PWAD-GNR-5V2A-EU



CHA-PWAD-GNR-5V2A-UK



CHA-PWAD-GNR-5V2A-US



CHA-PWAD-GNR-5V2A-AU

Improve management efficiency of devices and operational level of enterprises

Bottom Charger

Bottom charger for the main unit, support charging for 1 device. USB-A port, can connect with CHA-PWAD-GNR-5V2A-XX accessory

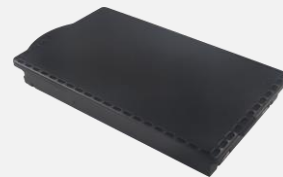


CHA-BTC-K3

Battery

5000mAh, detachable design.

ps: every product comes with 1 unit, you can purchase extra unit



CHA-BTRY-K3S-5000MA

Single Charging Cradle

Support charging for 1 main unit. Support plug types of China/Europe/UK/US/Australia

ps: you may have one of the power adapters



CHA-CRD1S-K3

4-slot Charging Cradle

Constituted by 4 CHA-CRD1S-K3S, support maximum charging of 4 main units at the same time. Support plug types of China/Europe/UK/US/Australia

ps: you may have one of the power adapters



CHA-CRD4S-K3

4-slot Battery Charging Cradle

Support maximum charging of 4 batteries at the same time. Support plug types of China/Europe/UK/US/Australia

ps: you may have one of the power adapters



CHA-CRD4B-K3S

Improve device portability and comfort for users, boost working efficiency

Fanny Pack

Used to carry main units and other accessories. Can be tied to the waist or used as a crossbody bag



MNT-FP-GNR

Lower risks of malfunction during usage, extend lifespan of devices

Protective Film

Protective film for touchscreen. It can protect the screen from cracking or being scratched in case there's any accidental drops or impact during usage



PRT-PTF-K3

The information of iData products and software service may be subject to change without notice. Please contact your iData sales representative for the latest details.



Official Website

WUXI IDATA TECHNOLOGY COMPANY LTD.

Address: Floor 11, Building B1, Wuxi (Binhu) National Sensing Information Center,
No.999 Gaolang East Road, Wuxi City, Jiangsu Province, P.R.C.

E-mail: sales@idataglobal.com

Website: www.idataglobal.com